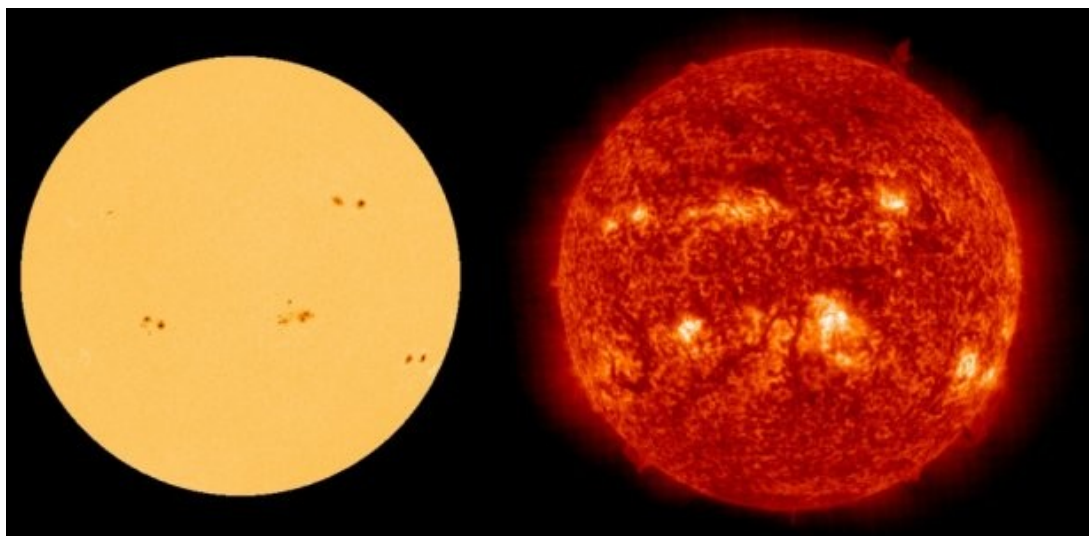
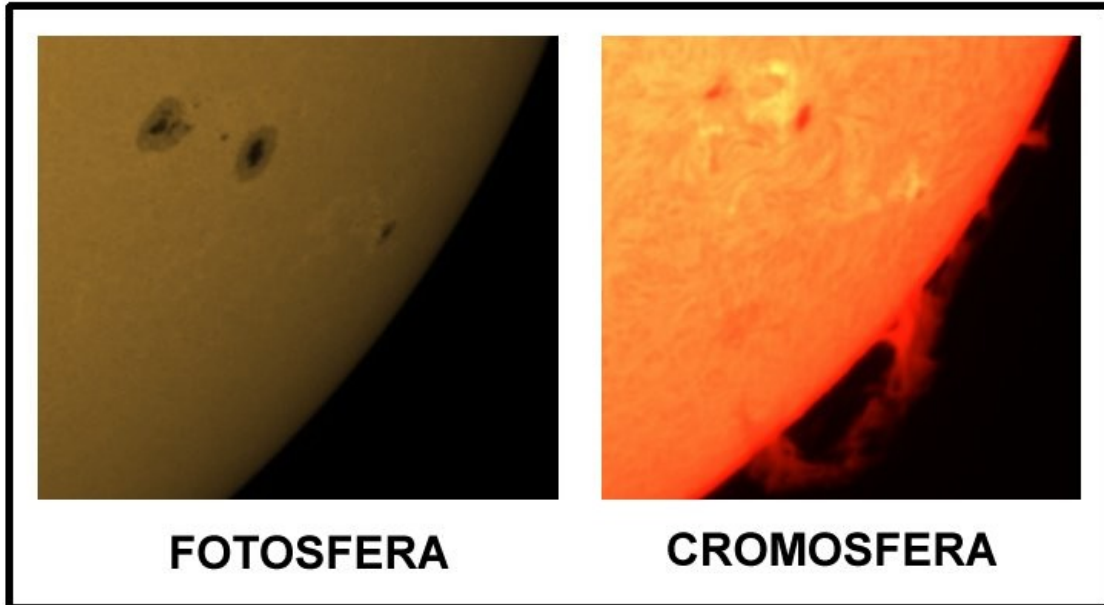


**RAPPORTO ATTIVITA' SOLARE**

**MAGGIO 2012**

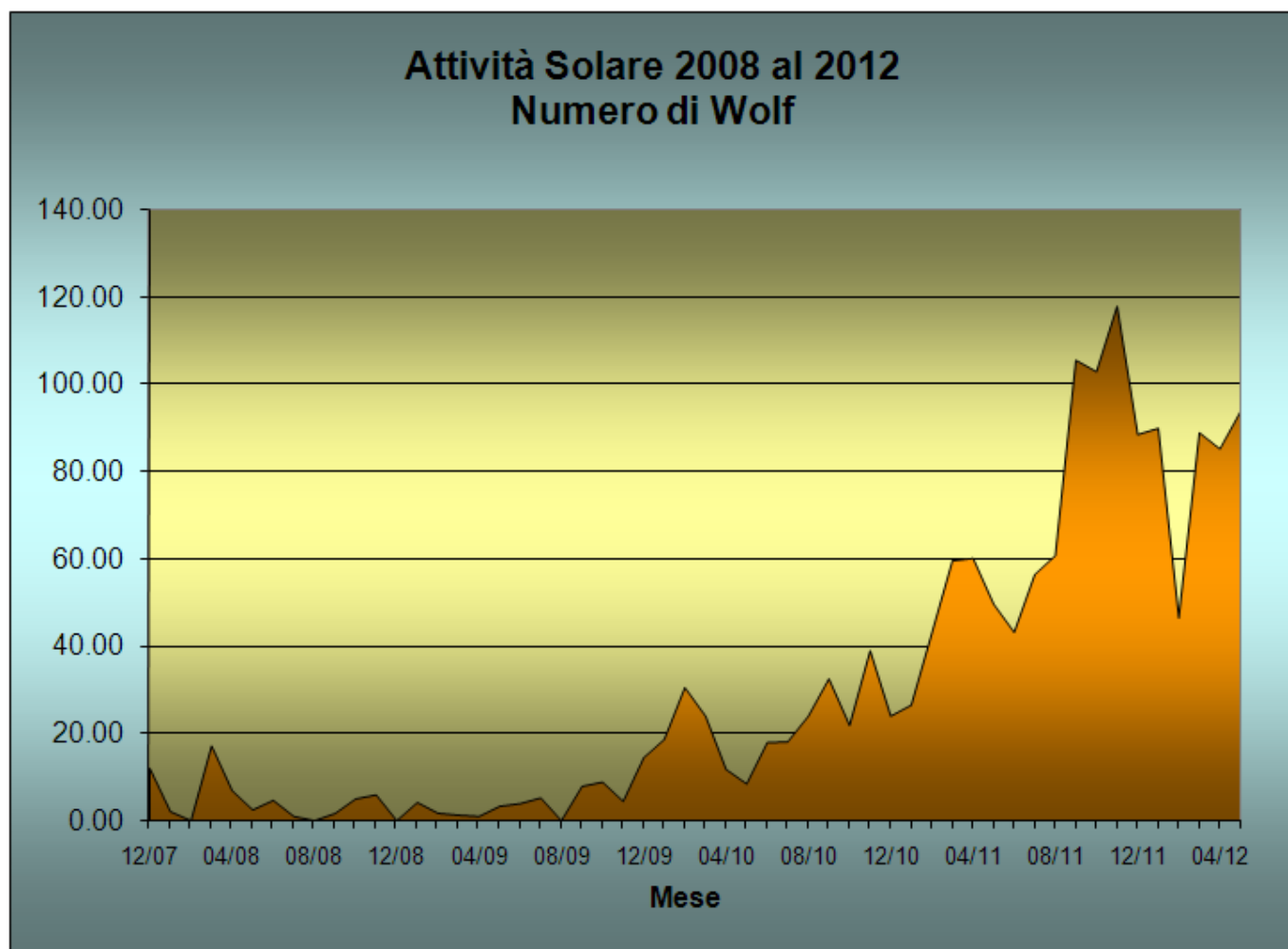


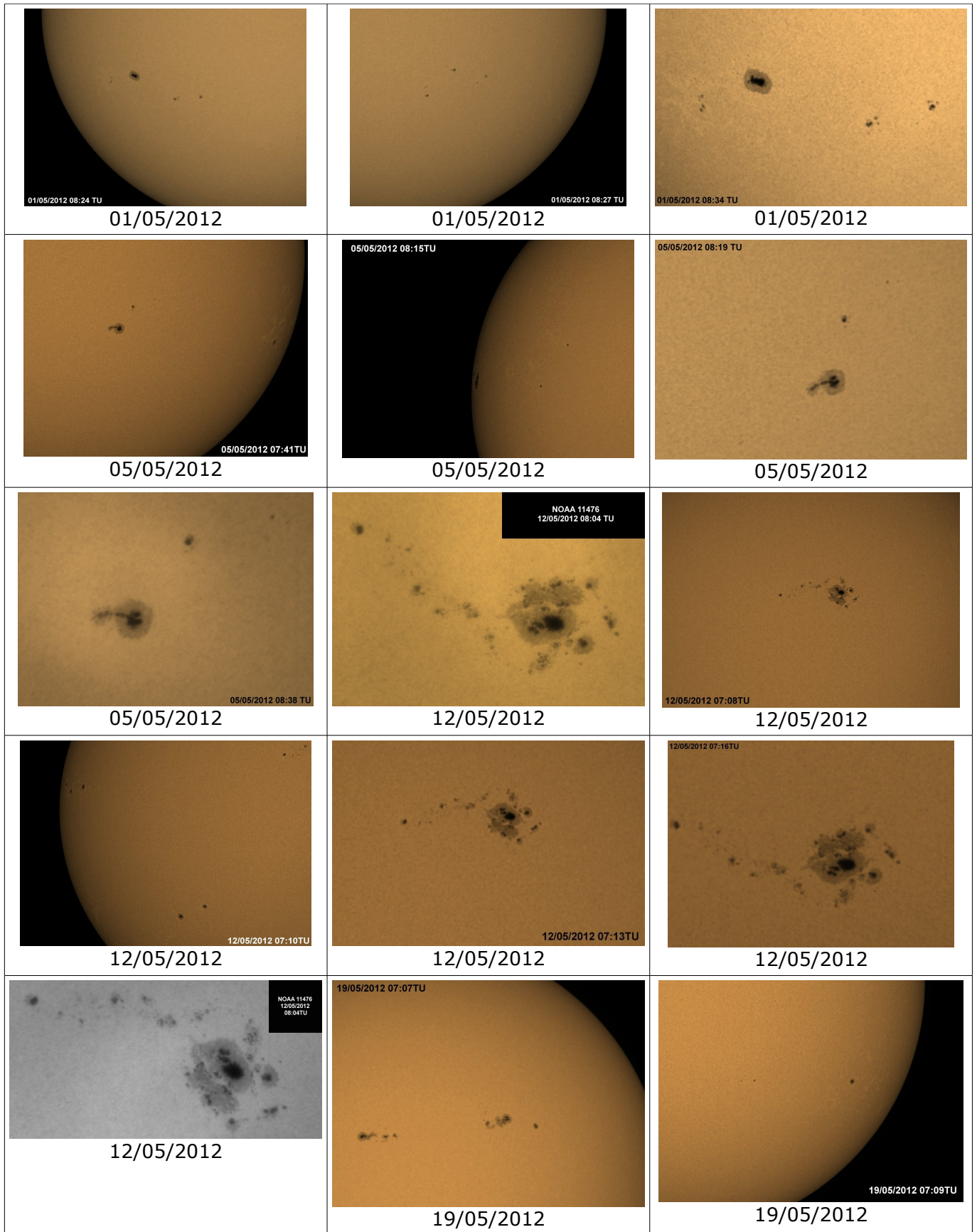
### TABELLA DEL NUMERO DI WOLF DELLE NOSTRE OSSERVAZIONI

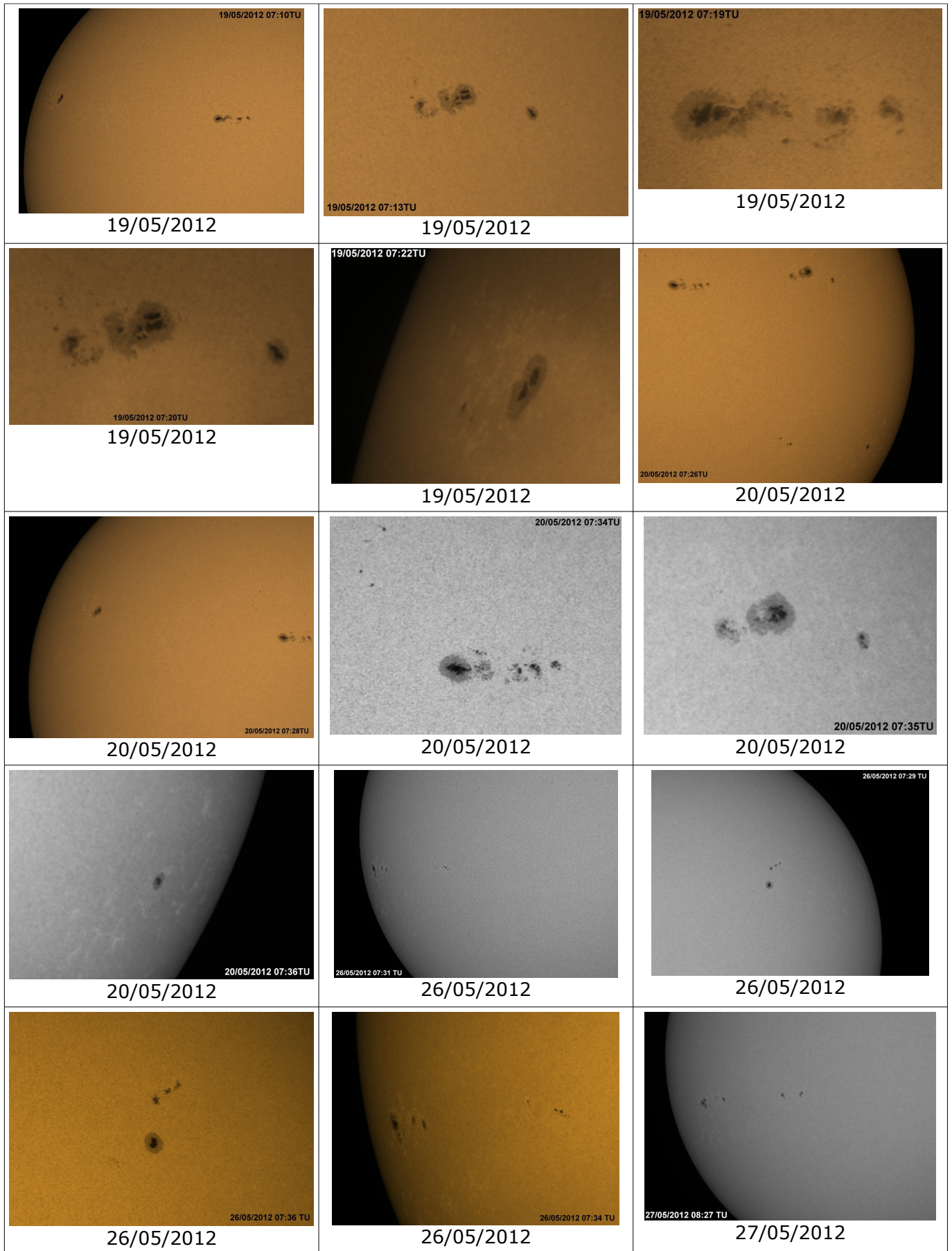
Mese	2007	2008	2009	2010	2011	2012
Gennaio	-	2,08	4,17	18,64	26,50	90,00
Febbraio	-	0,00	1,70	30,54	43,00	46,50
Marzo	-	17,14	1,28	24,00	59,63	89,00
Aprile	-	6,90	1,00	11,76	60,19	85,29
Maggio	-	2,48	3,30	8,43	49,69	93,86
Giugno	-	4,67	3,92	17,90	43,20	
Luglio	-	0,96	5,22	18,10	56,46	
Agosto	-	0,00	0,00	24,00	60,82	
Settembre	-	1,65	7,88	32,54	105,63	
Ottobre	-	5,00	8,85	21,86	103,00	
Novembre	-	5,93	4,44	39,00	118,00	
Dicembre	12,00	0,00	14,46	24,00	88,60	

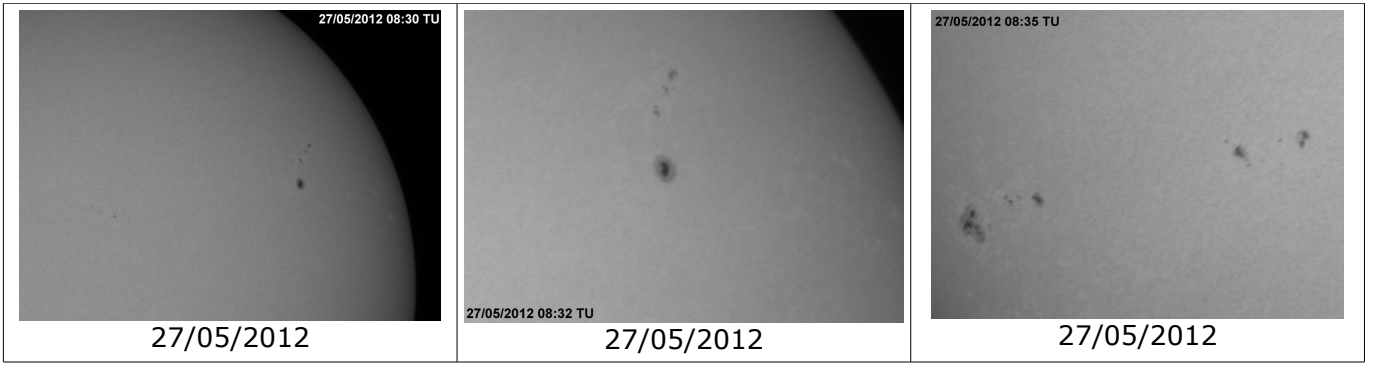
### GRAFICO DEL NUMERO DI WOLF DELLE NOSTRE OSSERVAZIONI

Numero Wolf = (10 x gruppi) + numero macchie









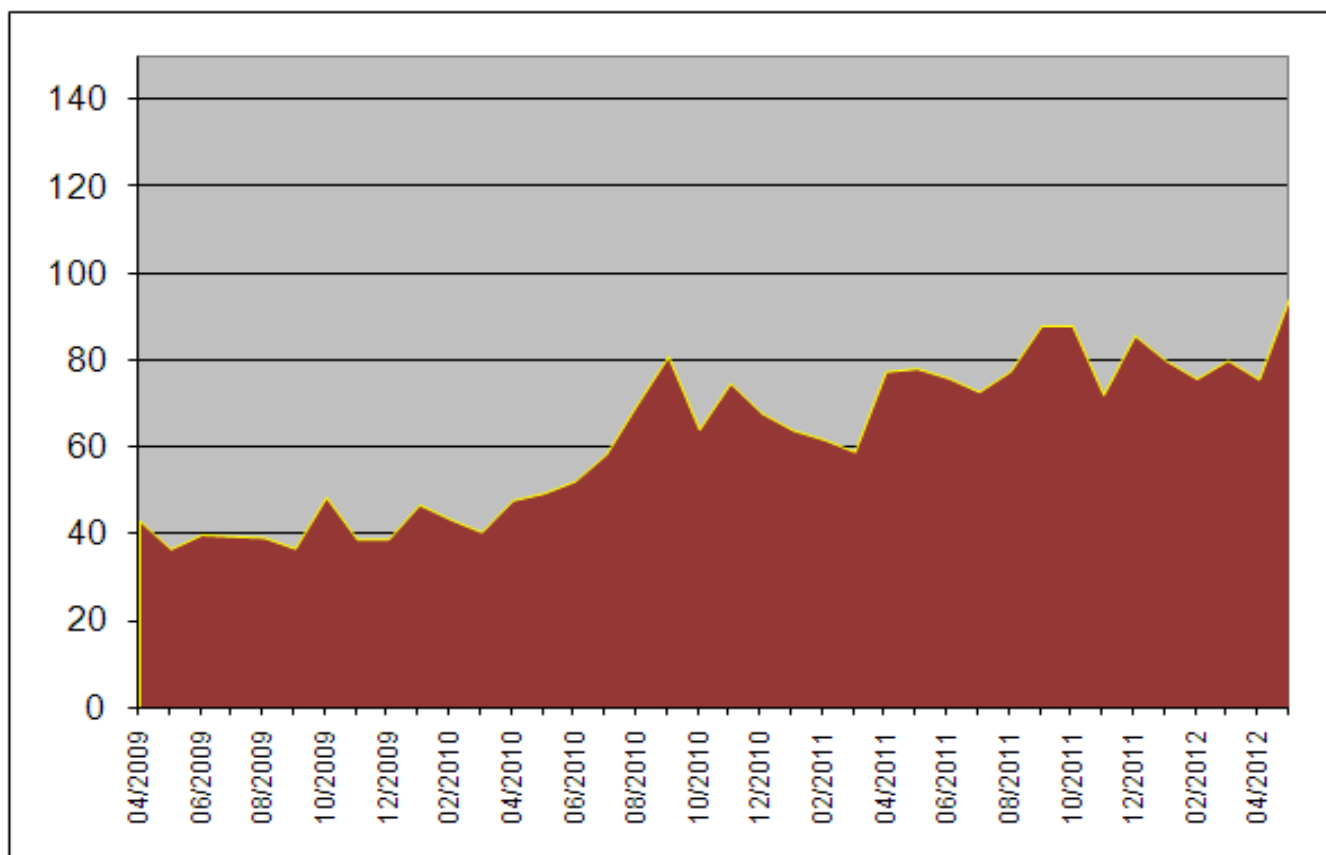
## OSSERVAZIONE MENSILE IN LUCE H-alfa (6563Å)

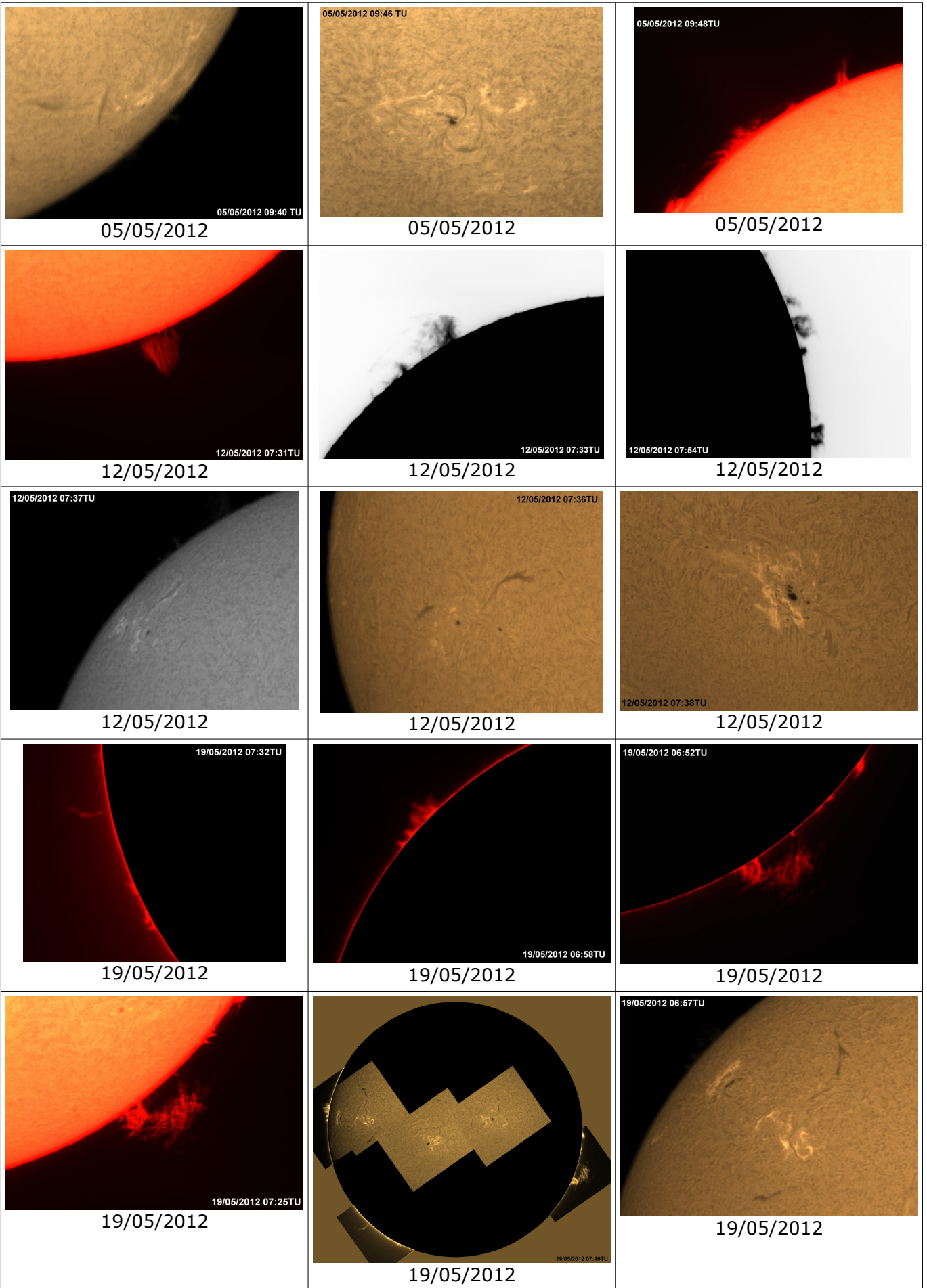
TABELLA DELLE PROTUBERANZE AL LEMBO (Rp totale)

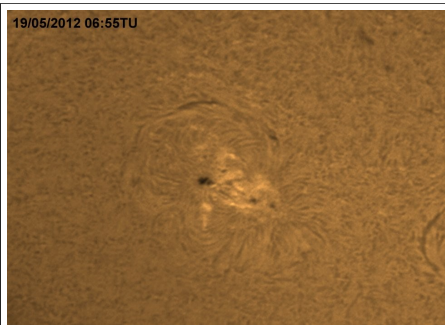
MESE	2009	2010	2011	2012
Gennaio		46,9	64,2	80,3
Febbraio		43,5	62,0	76,0
Marzo		40,6	59,1	80,3
Aprile	43,2	47,9	77,7	75,9
Maggio	36,7	49,6	78,4	95,0
Giugno	40,0	52,4	76,2	
Luglio	39,6	58,0	73,0	
Agosto	39,3	70,2	77,7	
Settembre	36,8	81,2	88,3	
Ottobre	48,7	64,3	88,3	
Novembre	38,9	75,0	72,3	
Dicembre	38,9	68,1	86,0	

GRAFICO

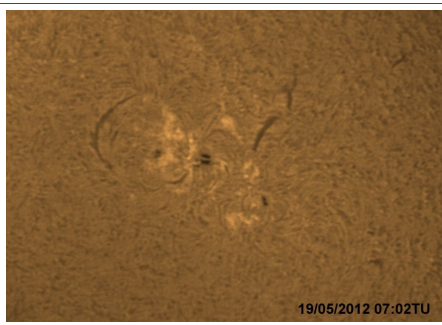
Rp totale = = (10 x nucleo di protuberanze) + struttura individuale



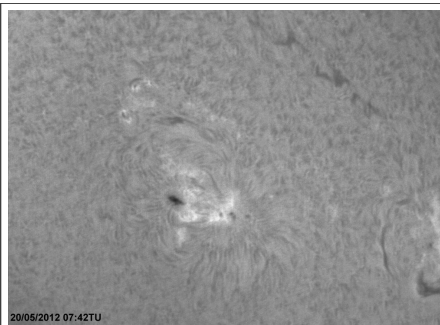




19/05/2012



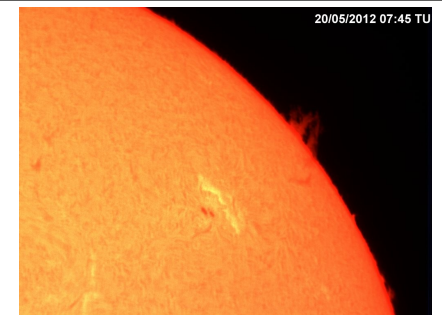
19/05/2012



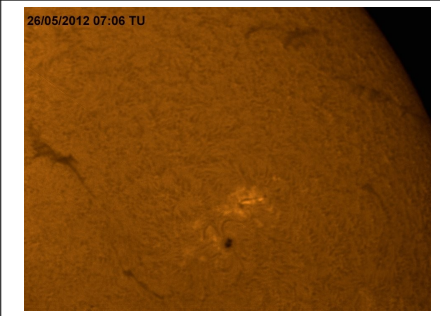
20/05/2012



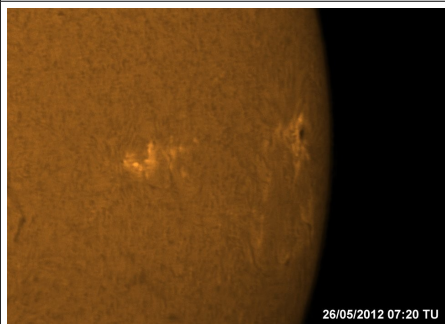
20/05/2012



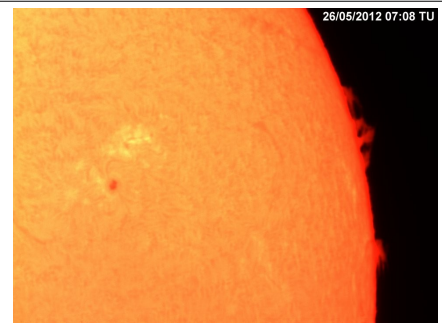
20/05/2012



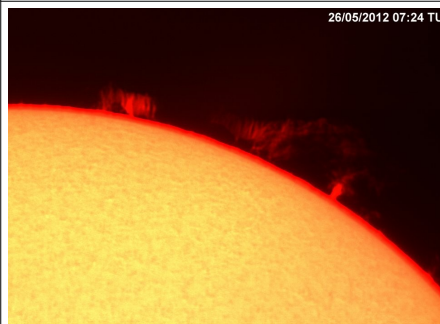
26/05/2012



26/05/2012



26/05/2012



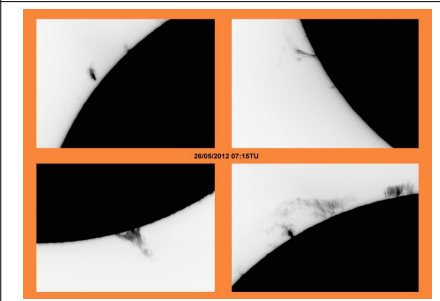
26/05/2012



26/05/2012



26/05/2012



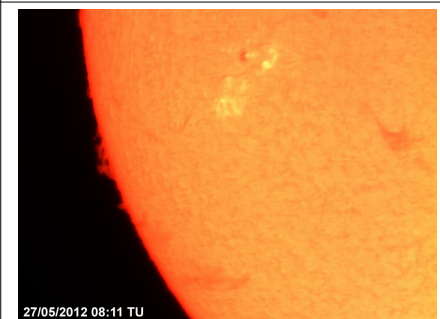
26/05/2012



27/05/2012



27/05/2012



27/05/2012

**Fabio Mariuzza**  
 Circolo ASTrofilii Talmassons (CAST)  
[www.castfvg.it](http://www.castfvg.it)  
 Maggiori informazione:  
[www.friulinelweb.it/sole.htm](http://www.friulinelweb.it/sole.htm)



